

20 October 2009

Press Release

UNIVERSITY HOSPITALS AWARDED TOP SCORES IN ANNUAL CARE QUALITY COMMISSION REPORT

The 2008/2009 CQC Annual Health Check, has once again demonstrated that University Hospitals are the best places to receive top quality care, after scoring highly during the assessment for the fourth consecutive year.

A total of 68% of AUKUH member Trusts were rated as 'excellent' or 'good' for Quality of Service, compared with just 41% of non-AUKUH member Trusts and 89% achieved an 'excellent' or 'good' rating for Financial Management, compared with 76% of non-AUKUH member Trusts. Overall, a total of 11 AUKUH Trusts were awarded a top rating in both Quality of Service and Financial Management, compared with 7 Trusts in 2007/2008 and 76% improved or maintained an 'excellent' rating on at least one of the two headline indicators, with 14 Trusts improving or maintaining their 'excellent' rating on both scores.

Ron Kerr, Chairman of AUKUH and Chief Executive at Guys and St Thomas' NHS Foundation Trusts is delighted with the results this year, 'this is another fantastic year for English AUKUH member Trusts and it is reassuring that their exceptional performance in relation to the high quality of teaching, research and patient care has been recognised once again'.

- Ends -

Notes to editors:

1. AUKUH is the jet leadership body across the UK promoting the unique interests of University Hospitals. Its role is to represent the unique tripartite – service, teaching and research – interests of UK University Hospital Trusts in partnership with other national bodies. For further information about the work of the AUKUH please see: www.aukuh.org.uk
2. AUKUH can be contacted at:
admin@medschools.ac.uk
Woburn House
20 Tavistock Square
London WC1H 9HD
Tel: +44(0)20 7380 1482
Fax: +44(0)20 7380 1482
3. The Care Quality Commission scores Trusts against a variety of indicators including core standards, national priorities and existing commitments as a provider of services, awarding 'excellent', 'good', 'fair' or 'weak' ratings based on performance of the key areas. The full report can be accessed at:
http://www.cqc.org.uk/db/documents/0809_NHS_ratings_overview_document.pdf
4. There are 38 AUKUH member Acute and Specialist Trusts in England, as defined by the Care Quality Commission, and one Mental Health Trust, South London and the Maudsley NHS Foundation Trust.

Appendix - Analysis of Care Quality Commission Annual Health Check 2008/09 (England only)

The Care Quality Commission (CQC) publication of the Annual Health Check of NHS Trusts in England has for the fourth consecutive year recognised the high quality care and financial management in AUKUH member Trusts, over and above the national average. The CQC scores Trusts against a number of key indicators including core standards, national priorities and existing commitments as a provider of services, awarding 'excellent', 'good', 'fair' or 'weak' ratings based on performance in these key areas. A total of eleven AUKUH Trusts – 29% - were scored as 'excellent' on both headline indicators, Quality of Service and Financial Management, compared with 15% of acute or specialist Trusts. 29 AUKUH member Trusts – 76% -improved or maintained a score of 'excellent' on at least one of the two headline indicators, with 14 Trusts improving or maintaining 'excellent' on both scores.

n.b. There are 38 AUKUH member Acute and Specialist Trusts in England, as defined by the Care Quality Commission, and one Mental Health Trust, South London and the Maudsley NHS Foundation Trust, which was rated as both 'good' and 'excellent'. The following analysis compares the 38 AUKUH member Acute and Specialist Trusts with the national average for this category. To download a full copy of the CQC report, and to view a full analysis of results please go to www.cqc.org.uk

Figure 1: Summary comparison of AUKUH and non-AUKUH Acute and Specialist Trusts, CQC ratings 2008-09

	Quality of Service 08/09				Financial Management 08/09			
	AUKUH		Acute non-AUKUH		AUKUH		Acute non-AUKUH	
Excellent	14	36.8%	23	17.6%	19	50.0%	53	40.5%
Good	12	31.6%	31	23.7%	15	39.5%	47	35.9%
Fair	11	28.9%	70	53.4%	4	10.5%	22	16.8%
Weak	1	2.6%	7	5.3%	0	0.0%	9	6.9%
Excellent or Good	26	68.4%	54	41.2%	34	89.5%	100	76.3%

Quality of Service

- 68% of AUKUH member Trusts were rated as 'good' or 'excellent' compared with 41% of non-AUKUH member Trusts
- 34% fewer non-AUKUH member Trusts scored 'good' or 'excellent' in 2008/09 compared with 2007/08, whereas the decline amongst AUKUH members was 12%.
- 45% of AUKUH members improved on their 2007/08 score, or maintained their score of 'excellent', compared with 33% of non-AUKUH members.
- The distribution of scores for AUKUH member Trusts was skewed towards 'excellent', compared with the skew of non-AUKUH members towards 'fair', as shown in Figure 2
- Whilst more AUKUH members are scored as 'fair' and fewer members scored as 'good' in 2008/09, it should be noted that a similar but more pronounced shift towards 'fair' is apparent across all acute and specialist Trusts

Figure 2: Distribution of Quality of Service ratings for AUKUH and non-AUKUH member Trusts, 2008/09

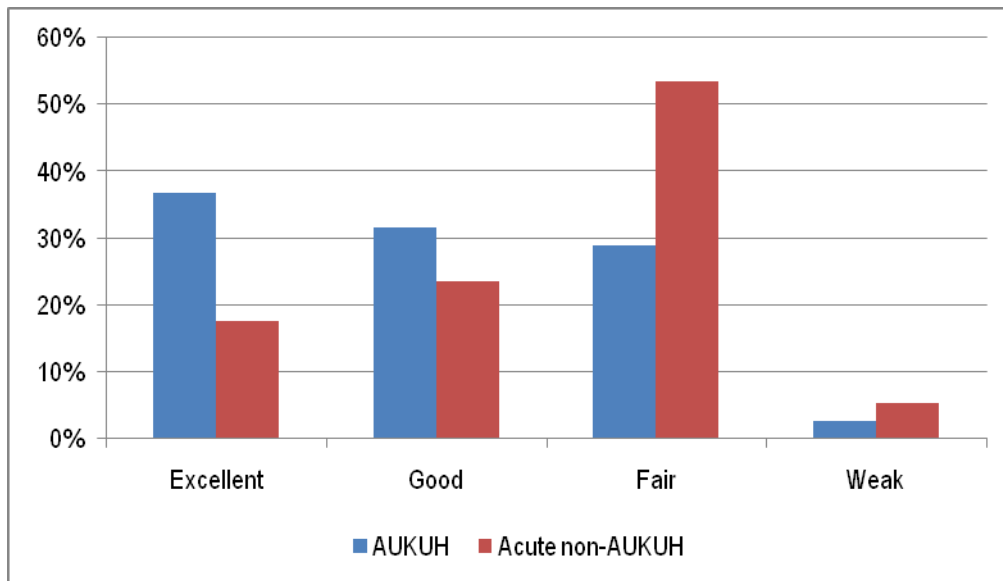


Figure 3: Change in Quality of Service rating 2005/06 – 2008/09



Financial Management

- 89% of AUKUH member Trusts were rated as good or excellent compared with 76% of non-AUKUH member Trusts
- All AUKUH members were scored as 'fair', 'good' or 'excellent' for the second consecutive year
- There was a shift towards 'excellent' and 'good', over and above the increase in scores across England NHS Trusts
- 68% of AUKUH member Trusts either improved on their 2007/08 score, or maintained a score of 'excellent'

Figure 4: Distribution of Financial Management ratings for AUKUH and non-AUKUH member Trusts, 2008/09

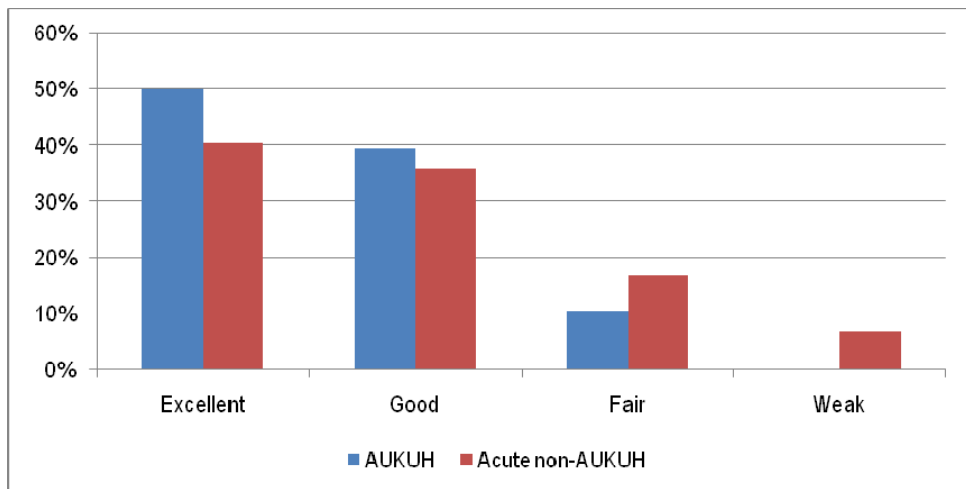


Figure 5: Change in Financial Management (formerly Use of Resources) rating 2005/06 – 2008/09

