

Healthcare Commission Annual Health Check

The Healthcare Commission Annual Health Check 2006/07 has shown that, once again, AUKUH member Trusts have, as a whole, performed exceptionally well. 12% of AUKUH members were rated 'Excellent' for both use of resources and quality of service, compared to 9% of non-AUKUH Acute Trusts¹. Also, whilst 6% of non-AUKUH Acute Trusts were rated 'Weak' for use of resources and quality of service, no AUKUH member Trusts fell into this category.

Figure 1: Summary comparison of AUKUH and non-AUKUH Acute Trusts Healthcare Commission ratings

	Quality of Service 06/07		Use of Resources 06/07	
	AUKUH	Acute non-AUKUH	AUKUH	Acute non-AUKUH
Excellent	32%	16%	32%	26%
Good	47%	34%	26%	20%
Fair	18%	42%	24%	17%
Weak	3%	8%	18%	37%
Excellent or Good	79%	50%	59%	46%

Quality of Service

- 79% of AUKUH member Trusts were rated 'Excellent' or 'Good', compared to 50% of non-AUKUH Acute Trusts
- The distribution of AUKUH members Trusts was skewed towards 'Good', whereas the overall pattern for non-AUKUH Acute Trusts was skewed towards 'Fair' (see Figure 2)
- Despite this different distribution, the trend from last year for AUKUH member Trusts generally reflects the overall trend for all Trusts with an increase in Trusts rated 'Excellent' and a decrease in those rated 'Good' (see Figure 3)

Figure 2: Distribution of quality of service ratings for AUKUH and non-AUKUH Acute Trusts

¹ Acute or Specialist Trusts as listed by the Healthcare Commission

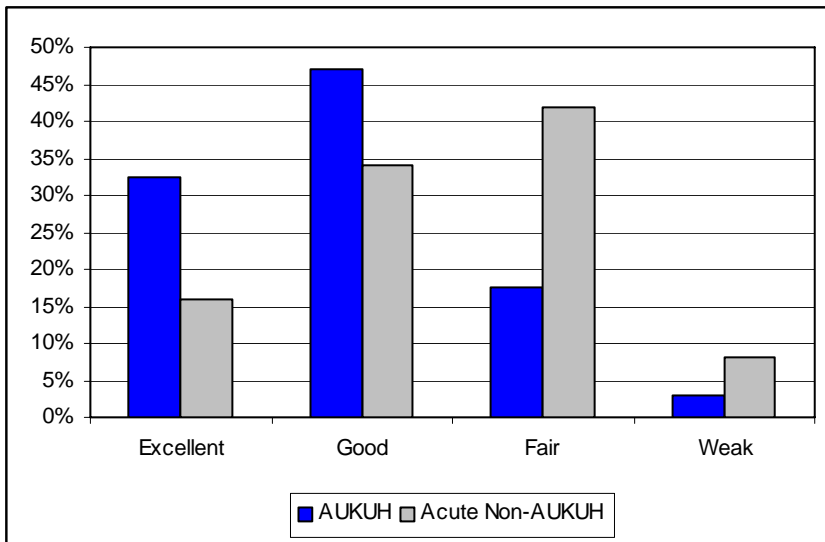
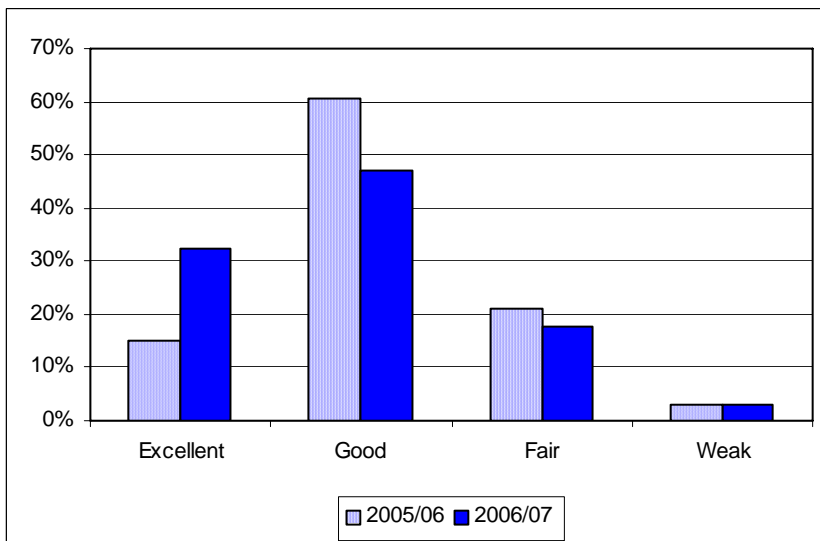


Figure 3: Change in quality of service rating 2005/06 - 2006/07: AUKUH members



Use of Resources

- The margin between AUKUH member Trusts and non-AUKUH Acute Trusts at the higher end of performance on use of resources was less than for quality of service, with 59% of AUKUH member Trusts were rated 'Excellent' or 'Good', compared to 46% of non-AUKUH Acute Trusts
- However, whilst the pattern of ratings for AUKUH member Trusts showed a standard distribution, with the greatest number of Trusts rated 'Excellent' for use of resources, the distribution of ratings for non-AUKUH Acute Trusts was skewed by a high proportion of Trusts rated as 'Weak'
- In fact, only 18% of AUKUH member Trusts were rated as 'Weak' for use of resources, compared to more than double that percentage (37%) for non-AUKUH Acute Trusts
- In terms of change from the 2005/06 Healthcare Commission ratings the ratings for AUKUH member Trusts represent a real turnaround. In 2005/06 the distribution of ratings for AUKUH member Trusts reflected the overall pattern seen for Trusts as a whole (including non-acute Trusts), with a skew towards 'Fair' ratings

Figure 4: Distribution of use of resources ratings for AUKUH and non-AUKUH Acute Trusts

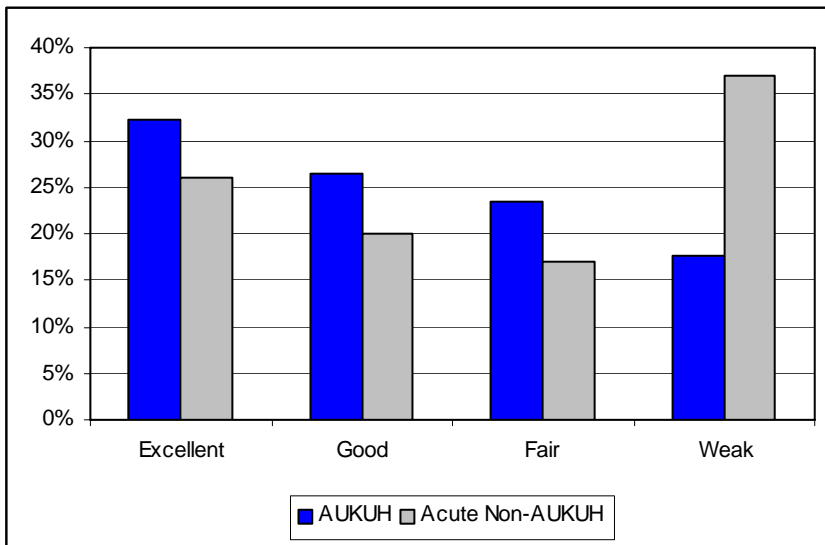


Figure 5: Change in use of resources rating 2005/06 - 2006/07: AUKUH members

